

The Living Christ

music by Lana Osmun
(801) 756-8292

Piano

As

5

we com-mem-or-ate the birth of Je-sus Christ two mel-len-ni-a a-go, we of-fer our test-i-mon-y

Pno.

9

of the re-al-i-ty of His match-less life and the in-fin-ite vir-tue of His great a-

Pno.

The Living Christ

2

12

ton ing sac ri fice. None oth-er has had so pro-found an in-flu-ence u - pon

Piano accompaniment for the first system, measures 12-14. The right hand features chords and moving lines, while the left hand provides a steady bass line.

15

all who have lived and will yet live u-pon the earth. He was the great Je-hov - ah

Piano accompaniment for the second system, measures 15-17. The right hand continues with chords and moving lines, and the left hand maintains the bass line.

18

of the Old Test-a-ment, the Mes-si-ah of the New. Un-der the dir-ec-tion of His

Piano accompaniment for the third system, measures 18-20. The right hand features chords and moving lines, and the left hand maintains the bass line.

The Living Christ

21

Vocal line for measures 21-23. The melody consists of eighth and quarter notes, with a fermata over the final note of the phrase.

Fath-er, He was the cre-at-or of the earth. "All things were made by him; and with-out

21

Pno.

Piano accompaniment for measures 21-23. The right hand features chords and moving lines, while the left hand provides a steady bass line.

24

Vocal line for measures 24-26. The melody continues with eighth and quarter notes, ending with a fermata.

him was not an - y thing made that was made" Though sin - less, He was

24

Pno.

Piano accompaniment for measures 24-26. The right hand has chords and moving lines, and the left hand has a bass line.

26

Vocal line for measures 26-28. The melody consists of quarter notes, ending with a fermata.

bap-tized to ful-fill all right-eous - ness.

26

Pno.

Piano accompaniment for measures 26-28. The right hand has chords and moving lines, and the left hand has a bass line.

30

He "went a-bout do-ing good" yet was des - pised for it. His

Pno.

Detailed description: This system contains measures 30, 31, and 32. The vocal line (treble clef) begins with a whole rest in measure 30, followed by a quarter note G4 in measure 31, and continues with eighth and quarter notes in measure 32. The piano accompaniment (grand staff) features a rhythmic pattern of eighth notes in the right hand and quarter notes in the left hand.

33

gos-pel was a mes - sage of peace and good-will. He en-treat ed all to fol-low His ex-am - ple. He

Pno.

Detailed description: This system contains measures 33, 34, and 35. The vocal line (treble clef) continues with eighth and quarter notes. The piano accompaniment (grand staff) maintains the rhythmic accompaniment with chords in the right hand and single notes in the left hand.

36

walked the roads of Pal - es - tine, heal - ing the sick, caus - ing the blind to see, rais - ing the dead.

Pno.

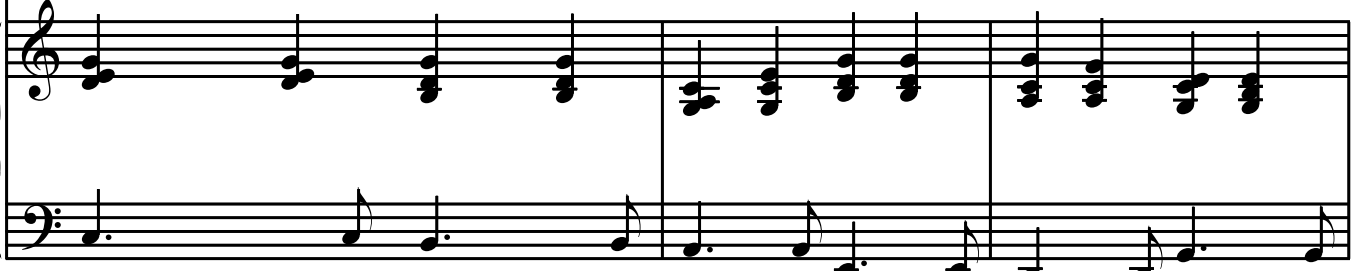
Detailed description: This system contains measures 36, 37, and 38. The vocal line (treble clef) continues with eighth and quarter notes. The piano accompaniment (grand staff) concludes the piece with a final chord in the right hand and a few notes in the left hand.

39



He taught the truths of e-ter-ni-ty, the re - al - i - ty of our pre - mor - tal ex - is - tence, the

39



Pno.

42



pur - pose of our life on earth, and the po-ten - tial for the sons and daugh - ters of

42



Pno.

45



God in the life to come. He in-sti-tu-ted the sac-ra-ment as a re-mind-er of His great a -

45



Pno.

48

ton - ing sac - ri - fice. — He was a - rest - ted and con - demned on

Piano accompaniment for measures 48-50. The right hand features a steady eighth-note accompaniment, while the left hand provides a simple bass line.

51

spur - i - ous charg-es, con - vic - ted to sat - is - fy a mob, and sen - tenced to die on

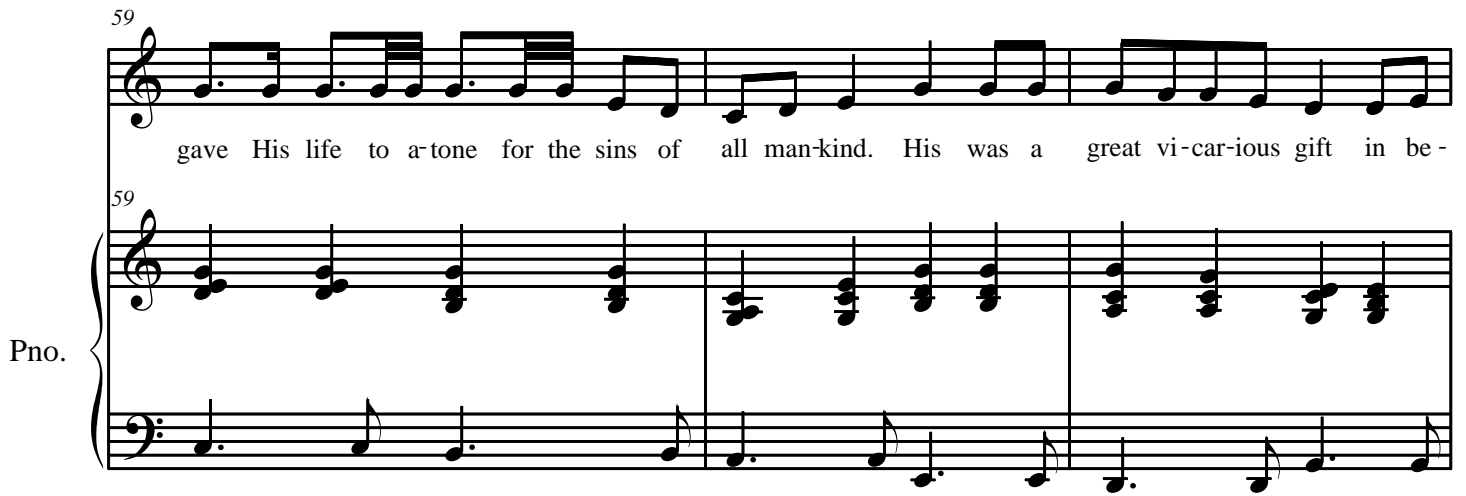
Piano accompaniment for measures 51-53. The right hand continues with a steady eighth-note accompaniment, and the left hand maintains a simple bass line.

54

Cal - vry's cross. He

Piano accompaniment for measures 54-56. The right hand features a steady eighth-note accompaniment, while the left hand provides a simple bass line.

59



gave His life to atone for the sins of all man-kind. His was a great vi-car-ious gift in be -

Pno.

This system contains the first musical staff with a vocal line and the first system of piano accompaniment. The piano part consists of a treble and bass clef with chords and a bass line.

62




half of all who would e-ver live u-pon the earth. We solemn-ly tes - t - i fy that His

Pno.

This system contains the second musical staff with a vocal line and the second system of piano accompaniment. The piano part continues with chords and a bass line.

65



life, which is cen-tral to all hum-an his-to ry, nei-ther be-gan in Beth-le-hem nor con-clud-ed on

Pno.

This system contains the third musical staff with a vocal line and the third system of piano accompaniment. The piano part continues with chords and a bass line.

The Living Christ

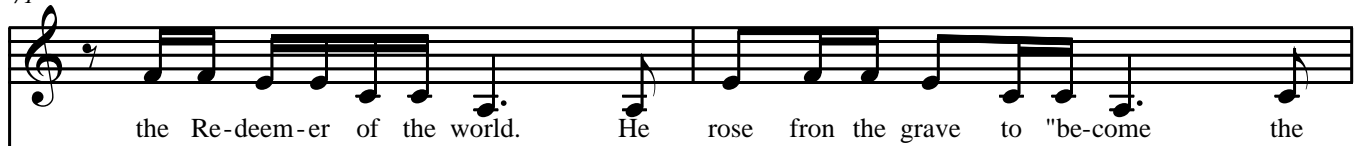
68



Pno.

Piano accompaniment for measures 68-70, featuring chords in the right hand and a bass line in the left hand.

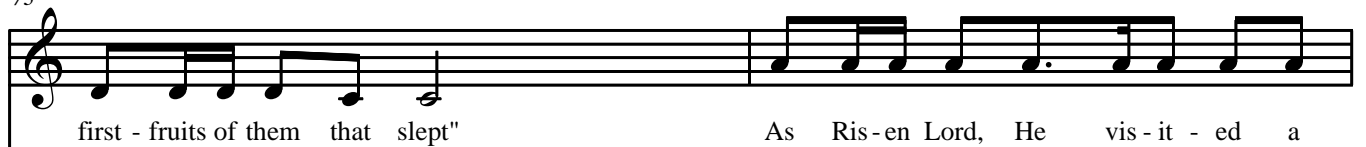
71



Pno.

Piano accompaniment for measures 71-72, featuring chords in the right hand and a bass line in the left hand.

73



Pno.

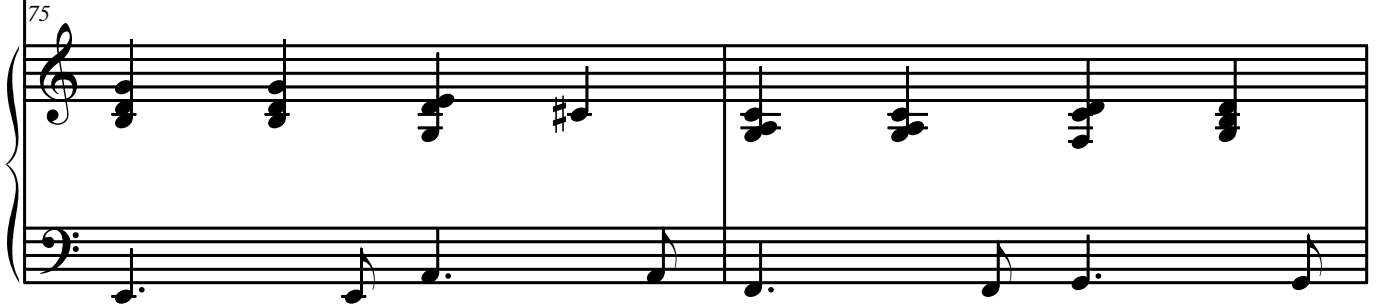
Piano accompaniment for measures 73-75, featuring chords in the right hand and a bass line in the left hand.

75



mong those He had loved in life. He al - so min-is-tered a-mong His "o - ther

Pno.

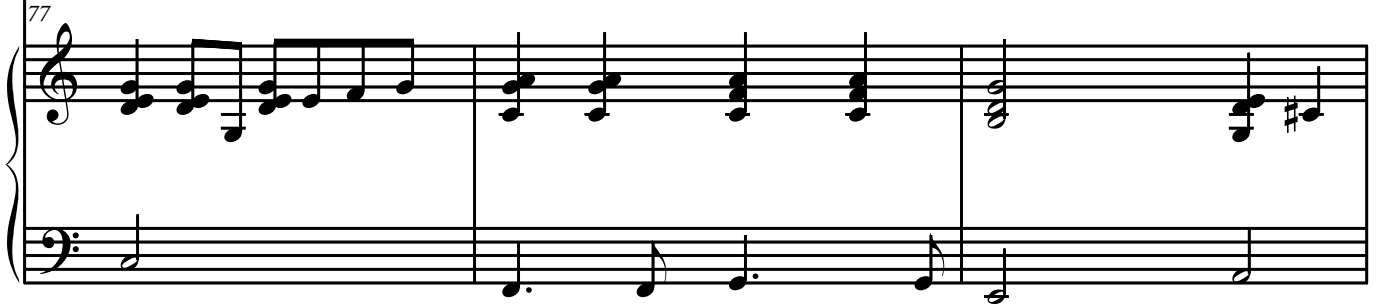


77



sheep" in an-cient A - mer - i - ca. In the mod-ern world, He and His Fa-ther a-ppeared

Pno.

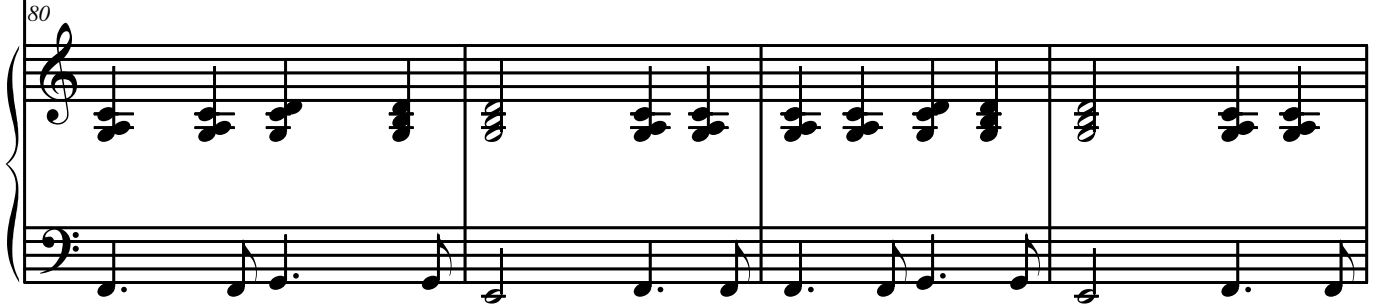


80



to the boy Jo-seph Smith, u - sher-ing in the long - prom ised "dis - pen - sa - tion of the

Pno.



84

ful - ness of times."

Pno.

Piano accompaniment for measures 84-87, featuring chords in the right hand and a bass line in the left hand.

88

Of the Liv-ing Christ, the Pro-phet Jos-eph wrote: "His eyes were as a flame of

Pno.

Piano accompaniment for measures 88-90, featuring chords in the right hand and a bass line in the left hand.

91

fire; the hair of his head was white like the pure snow; his

Pno.

Piano accompaniment for measures 91-93, featuring chords in the right hand and a bass line in the left hand.

94

coun - ten - ance shone a - bove the bright - ness of the sun; and his voice was as the

Pno.

Piano accompaniment for measures 94-96, featuring chords in the right hand and a simple bass line in the left hand.

97

sound of the rush - ing great wat - ers, e - ven the voice of Je - ho - vah say - ing:

Pno.

Piano accompaniment for measures 97-99, featuring chords in the right hand and a simple bass line in the left hand.

100

"I am the first and the last; I am he who live - th, I am he who was slain; I

Pno.

Piano accompaniment for measures 100-102, featuring chords in the right hand and a simple bass line in the left hand.

103

am your ad-vo-cate with the fa-ther"

Pno.

107

Of Him the Pro-phet al-so de-clared: "And now, af-ter the man-y test-i-mon-ies

Pno.

110

which have been giv-en of him, this is the test-i-mon-y, last of all,

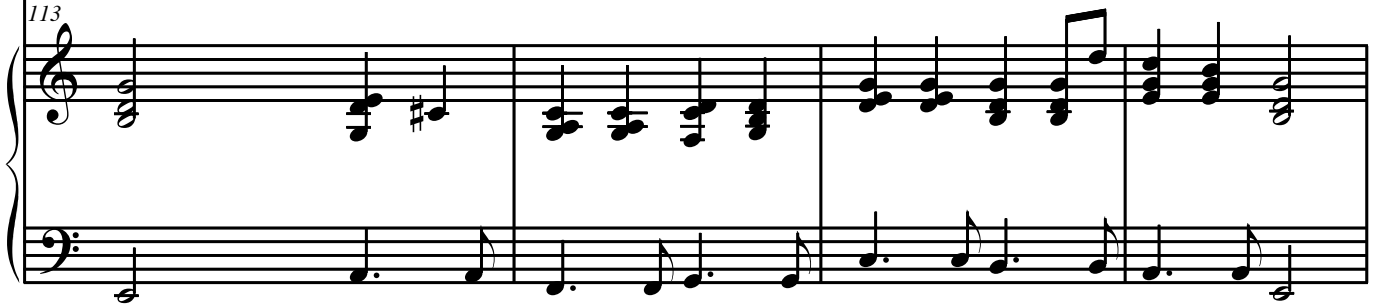
Pno.

113



which we give of him: That he lives!

Pno.



117



"For we saw him, e - ven on the right hand of

Pno.



120



God; and we heard the voice bear - ing rec - ord that he is the On - ly Be -

Pno.



123

got - ten of the Fa - ther "That by him, and through him, and of him, the

Pno.

125

worlds are and were cre-at-ed, and the in - hab-it-ants there-of are be-got-ten sons and daugh-ters

Pno.

128

un-to God" We de - clare in words of solem-ni-ty that His priest-hood and His Church have been re-

Pno.

131

stored u-pon the earth "built up-on the foun-da-tion of a - po-stles and pro-phets,

Pno.

Piano accompaniment for measures 131-133, featuring chords in the right hand and a simple bass line in the left hand.

134

Je-sus Christ him-self be-ing the chief cor-ner stone" We test-i-fy that He will some-day re-turn to

Pno.

Piano accompaniment for measures 134-136, featuring chords in the right hand and a simple bass line in the left hand.

137

earth. "And the glo-ry of the Lord shall be re-vealed, and all flesh shall see it to-geth-er"

Pno.

Piano accompaniment for measures 137-139, featuring chords in the right hand and a simple bass line in the left hand.

140

He will rule as King of Kings and reign as Lord of Lords, and ev-ery knee shall bend and

Pno.

Piano accompaniment for measures 140-142, featuring chords in the right hand and a bass line in the left hand.

143

ev - ery tongue shall speak in wor-ship be - fore Him.

Pno.

Piano accompaniment for measures 143-145, featuring chords in the right hand and a bass line in the left hand.

147

Each of us will stand to be judged of Him ac- cør ding

Pno.

Piano accompaniment for measures 147-149, featuring chords in the right hand and a bass line in the left hand.

150

to our works and the de-si-res of our hearts. We bear test-i-mon-y, as His

Pno.

Piano accompaniment for measures 150-152, featuring chords in the right hand and a bass line in the left hand.

153

du-ly or-dained A-post les that Je-sus is the Liv-ing Christ, the im - mor-tal Son of God.

Pno.

Piano accompaniment for measures 153-155, featuring chords in the right hand and a bass line in the left hand.

156

He is the great King Im-man-u-el, — who stands to-day on the right hand of His Fa-ther.

Pno.

Piano accompaniment for measures 156-158, featuring chords in the right hand and a bass line in the left hand.

159



Pno.

Piano accompaniment for measure 159, featuring chords in the right hand and a simple bass line in the left hand.

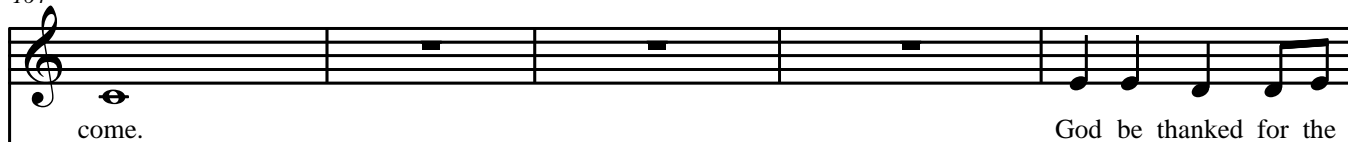
161



Pno.

Piano accompaniment for measure 161, featuring chords in the right hand and a simple bass line in the left hand.

164



Pno.

Piano accompaniment for measure 164, featuring chords in the right hand and a simple bass line in the left hand.

169

match-less gift of His di-vine son. Of His di-vine

A single vocal staff in treble clef. The melody consists of quarter and eighth notes. The lyrics are: "match-less gift of His di-vine son. Of His di-vine".

Pno.

Piano accompaniment for measures 169-173. The right hand features chords and moving lines, while the left hand plays a steady eighth-note bass line.

174

son.

A single vocal staff in treble clef. The melody consists of a single half note. The lyrics are: "son.".

Pno.

Piano accompaniment for measure 174. The right hand has a few chords, and the left hand has a few notes.