

# Where He Walks

Words by Marjorie Wax  
Music by Lana Osmun

Piano

"Come

Detailed description: This system contains the first four measures of the piece. The vocal line (treble clef) has a key signature of one sharp (F#) and a 4/4 time signature. It begins with a whole rest for three measures, followed by a quarter note G4 in the fourth measure. The piano accompaniment (grand staff) features a steady eighth-note bass line in the left hand and a melody in the right hand that starts with a quarter rest in the first measure and then follows the vocal line's pitch contour.

5

walk with Me" the Sav - ior said "And fol - low in the path I tread. I'll

Pno.

Detailed description: This system contains measures 5 through 8. The vocal line continues with a melody of quarter notes: A4, G4, F#4, E4, D4, C4, B3, A3, G3, F#3, E3, D3. The piano accompaniment continues with the same eighth-note bass line and right-hand melody.

9

take you to the moun-tains high and you can see through - out the sky.

Pno.

Detailed description: This system contains measures 9 through 12. The vocal line continues with a melody of quarter notes: C4, B3, A3, G3, F#3, E3, D3, C3, B2, A2, G2, F#2, E2. The piano accompaniment continues with the same eighth-note bass line and right-hand melody. The system concludes with a double bar line and a 2/4 time signature change.

Where He Walks

2  
13

You'll see the worlds God's hands have made — and you will

Pno.

16

ne - ver be a - fraid. — As we go glid - ing through the air —

Pno.

19

— we'll see the worlds that we will share.

Pno.

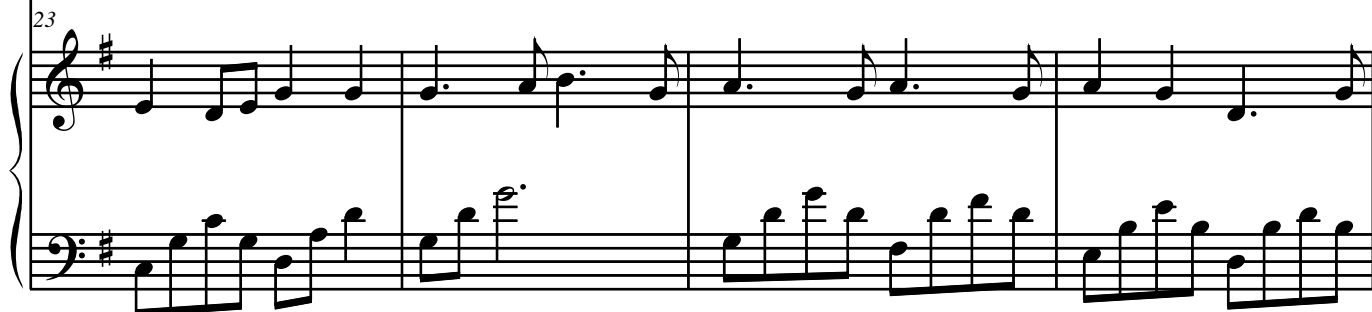
Where He Walks

23



I'll show you all that you can be if

Pno.

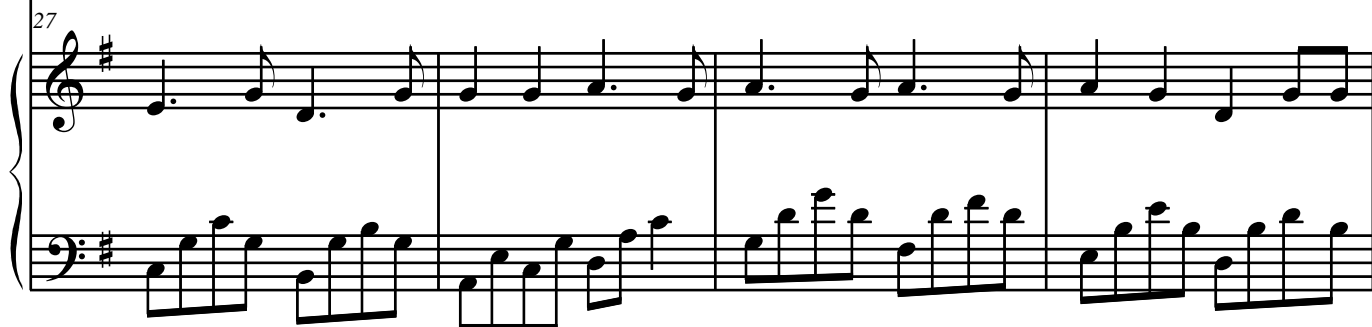


27



you re-pent and fol - low Me. I'll give you ev - ery thing you need but the

Pno.



31



laws of God you must al - ways heed. You must al-ways

Pno.



34

strive to do what's right — and pray to Him both day and night.

Pno.

37

— Always thank Him when you pray — and He will

Pno.

40

guide you day by day.

Pno.

44

Piano accompaniment for measures 44-47. The right hand is mostly silent, while the left hand plays a steady eighth-note accompaniment. The key signature has one sharp (F#).

48

If you are faith - ful in all you do — His an - gels

Vocal line and piano accompaniment for measures 48-50. The vocal line is in the treble clef, and the piano accompaniment is in the bass clef. The lyrics are: "If you are faith - ful in all you do — His an - gels".

51

will watch o - ver you. — I will teach you what you should

Vocal line and piano accompaniment for measures 51-53. The vocal line is in the treble clef, and the piano accompaniment is in the bass clef. The lyrics are: "will watch o - ver you. — I will teach you what you should".

54

A single vocal staff in treble clef with a key signature of one sharp (F#). It contains four measures of music. The first measure starts with a quarter rest, followed by eighth notes G4, A4, B4, C5, and a half note D5. The second measure has a quarter rest, followed by eighth notes C5, B4, A4, G4, and a half note F#4. The third measure has a quarter rest, followed by eighth notes E4, D4, C4, and a half note B3. The fourth measure is a whole rest.

be for God loves you as He loves Me."

54

Pno.

Piano accompaniment for measures 54-57. The right hand (treble clef) plays a melody of eighth notes: G4, A4, B4, C5, D5, C5, B4, A4, G4, F#4, E4, D4, C4, B3. The left hand (bass clef) plays a bass line of eighth notes: F#3, G3, A3, B3, C4, D4, E4, F#4, G4, A4, B4, C5, D5, C5, B4, A4, G4, F#4, E4, D4, C4, B3.

58

A single vocal staff in treble clef with a key signature of one sharp (F#). It contains two measures, both of which are whole rests.

58

Pno.

Piano accompaniment for measures 58-59. The right hand (treble clef) plays a melody of eighth notes: G4, A4, B4, C5, D5, C5, B4, A4, G4, F#4, E4, D4, C4, B3. The left hand (bass clef) plays a bass line of eighth notes: F#3, G3, A3, B3, C4, D4, E4, F#4, G4, A4, B4, C5, D5, C5, B4, A4, G4, F#4, E4, D4, C4, B3.